



CLARENCE HEALTH SERVICE

# MACLEAN DISTRICT HOSPITAL & COMMUNITY HEALTH

STUDENT INFORMATION  
PACKAGE

2020



## ABOUT UCRH (University Centre for Rural Health)

### Our Aim and Interests

At UCRH we aim to provide the best possible educational experience in rural health for medical, nursing and allied health students, and to facilitate continuing professional development for rural health practitioners. We have a strong interest in health services, systems research and development. We are uniquely and ideally placed to support interdisciplinary education, and to integrate research into our education programs.

### Our Origins and Development

The University Centre for Rural Health – North Coast (UCRH) has grown from the foundation in 2001 of the Northern Rivers University Department of Rural Health, through the foresight and goodwill of local leadership, Sydney University and the regional Health Service, now Northern NSW Local Health District.

From the original inception of our organisation we have assisted a range of undergraduate students from across the health disciplines to undertake placement in the area's hospitals, GP practices and primary health care settings. This has been possible due to funding provided by the Commonwealth Department of Health.

Our collaboration with the Universities of Wollongong and Western Sydney since 2007 has provided placements for "long stay" medical students in addition to our shorter stay students. This major collaboration by these universities and new funding from the Commonwealth Department of Health for rural placements for allied health, pharmacy and dental students has greatly expanded the medical education and other opportunities for health education in the NSW Northern Rivers area.

### Grafton Campus

The UCRH Grafton Campus coordinates student placements at both the Grafton Base Hospital and Maclean District Hospital sites. The friendly staff at both sites assist in providing a high quality health professional education and placement (see Student Coordination Contacts table for contact details). Our long term goal is to see students succeed in their chosen field and return as employees of the Northern New South Wales Local Health District.



## ABOUT MACLEAN DISTRICT HOSPITAL & COMMUNITY HEALTH

Maclean District Hospital & Community Health is a level 3 rural hospital within the Northern New South Wales Local Health District, providing care to over 2,300 patients every year. The hospital undertakes over 390 surgical procedures and sees over 13,400 Emergency attendances annually.

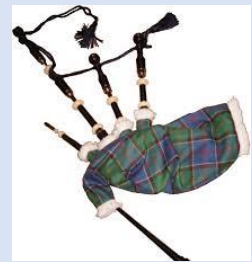
The Emergency Department is staffed by Senior Career Medical Officers and VMO General Practitioners.

On-site services include GP Medicine, Day Surgery, Inpatient Rehabilitation, Hospital in the Home, and Medical Imaging.

Allied Health Services include Physiotherapy (including onsite hydrotherapy pool), Occupational Therapy, Dietetics, Speech Pathology, Diabetic Education Services, Audiology, Community Health Services, Mental Health Services, Drug and Alcohol Services, and Counselling Services.

Diagnostic services include Medical Imaging and a broad range of off-site Pathology services.

Maclean calls itself the “Scottish Town in Australia”. Many of its Street signs are written in Gaelic and you will see the clan tartan decorating the streets. Maclean is also well known for its river fishing and its easy access to coastal national parks and resorts.



## WHERE TO FIND US

Maclean District Hospital & Community Health is located at 21 Union St, Maclean.

There are many different ways to get to your placement including driving, flying or catching the train/bus. If you are flying or catching public transport, please check the distance you will need to travel from the drop off point to your accommodation.

If driving, it is important to be especially careful as country roads are quite different from driving around the city. Make sure you allow plenty of time for travel and always let someone know when you are leaving and when you arrive. Maclean like many towns in the region have limited public or taxi services which is why we strongly recommend you bring your own transportation to make accessing your new placement community easier.

Before you go on placement find out about the distance of your accommodation is from your placement site and other facilities, such as supermarkets, ATMS, pool/gym, etc.

## STUDENT COORDINATION CONTACTS

	Name	Email	Phone
Acting Student Co-ordinator	Fiona MacCallum	<a href="mailto:NNSWLHD-GRA-StudentCoordinator@health.nsw.gov.au">NNSWLHD-GRA-StudentCoordinator@health.nsw.gov.au</a>	02 66418793 (Grafton) 02 66400137 (Maclean)
Student Administration Assistant	Angela Gibson & Karen Kelly	<a href="mailto:Angela.gibson1@health.nsw.gov.au">Angela.gibson1@health.nsw.gov.au</a> <a href="mailto:Karen.kelly@sydney.edu.au">Karen.kelly@sydney.edu.au</a>	02 66418798
Nursing Student Facilitators	Kaylene Lollback Fiona MacCallum Skye Osborne	<a href="mailto:Fiona.MacCallum@health.nsw.gov.au">Fiona.MacCallum@health.nsw.gov.au</a> <a href="mailto:Kaylene.lollback@health.nsw.gov.au">Kaylene.lollback@health.nsw.gov.au</a> <a href="mailto:Skye.Osborne@health.nsw.gov.au">Skye.Osborne@health.nsw.gov.au</a>	02 66418960 (Grafton) 02 66400123 (Maclean)
Physio Student Facilitator	James Mcinnes	<a href="mailto:James.mcinnes@health.nsw.gov.au">James.mcinnes@health.nsw.gov.au</a>	06 66400123
Grafton Student Accommodation	Angela Gibson & Karen Kelly	<a href="mailto:NNSWLHD-GRA-StudentAccom@health.nsw.gov.au">NNSWLHD-GRA-StudentAccom@health.nsw.gov.au</a>	02 66418798

## PRIOR TO PLACEMENT CHECKLIST

- You need to ensure your university has placed you in the ClinConnect student system with all your documents.
- You will need to organise your accommodation, see page 4.
- We require all students to complete the following online training:
  - Hand Hygiene Certificate, completed 12 months prior to commencement of placement
  - Introduction to Work Health and Safety
  - Hazardous Manual Tasks
  - Privacy Module 1 – Know your Boundaries
  - Management of the Deteriorating Patient (Between the Flags) – Tier 1 Awareness Charts and Escalation (Clinical Students Only)
- Evidence of current influenza vaccination
- Familiarise yourself with the LHD code of conduct.

[https://www1.health.nsw.gov.au/pds/ActivePDSDocuments/PD2015\\_049.pdf](https://www1.health.nsw.gov.au/pds/ActivePDSDocuments/PD2015_049.pdf)

## WHAT TO BRING TO YOUR PLACEMENT

- Signed Declaration from NNSW Orientation Manual
- University identification card
- Original criminal record check, immunisation documents and name change documents (if applicable).
- University uniform or professional attire
- A smile and a positive attitude.

## FIRST DAY INSTRUCTIONS

All students must report to the front foyer of Maclean District Hospital and Community Health at 08:00 on their first day. Students will be greeted and then taken for orientation.

As a general rule Orientation will include:

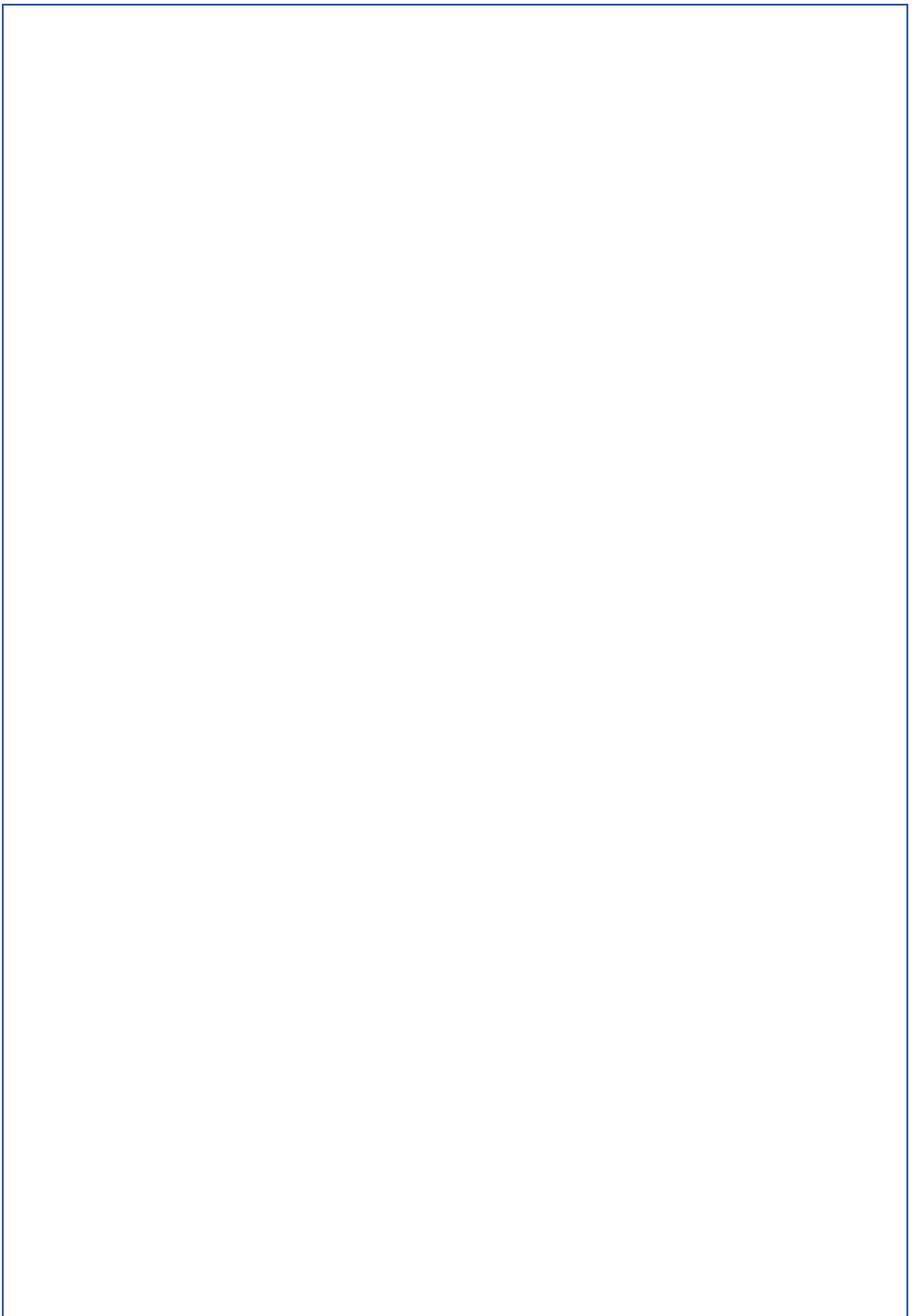
- Introductions
- Orientation package
- Distribution of rosters
- Issuing of Maclean District Hospital and Community Health student identification and swipe card
- Tour of relevant areas
- Infection Control and workplace Health and Safety Information

## ACCOMMODATION OPTIONS AT MACLEAN

There is no *student accommodation centre located at Maclean District Hospital*.

You will be required to make your **own arrangements**, please see below for suggestions

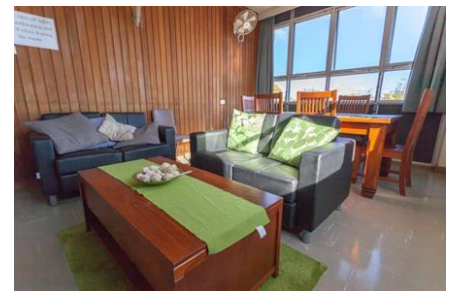
Option	Email	Phone	Approx. cost
Maclean Riverside Caravan Park	<a href="mailto:macleanriversidecaravanpark.com.au">macleanriversidecaravanpark.com.au</a>	(02) 6645 2987	\$500/week based on 2-3 people
Maclean Stays	<a href="mailto:relax@macleanstays.com.au">relax@macleanstays.com.au</a>	0408444289	\$650/week Based on 4 people
Motel Maclean	<a href="mailto:motelmaclean@bigpond.com">motelmaclean@bigpond.com</a>	(02) 6645 2494	\$625/week base on 3-4 people.
Private rental though Clarence Medical Centre	<a href="mailto:manager@clarencemedical.com.au">manager@clarencemedical.com.au</a>	(02) 6645 3299	Approx. \$200/week PP
Woombah Woods Caravan Park (20mins from Hospital)	<a href="mailto:office@woombahwoods.com.au">office@woombahwoods.com.au</a>	(02) 6645 4544	\$65 - \$90 per night for cabins
The Maclean Hotel	<a href="http://www.macleanhotel.com.au">http://www.macleanhotel.com.au</a> <a href="mailto:sarah@macleanhotel.com.au">sarah@macleanhotel.com.au</a>	(02) 6645 2412	\$120/night for quad room, \$55 - \$80/night for single room
Clarence Hotel	<a href="mailto:clarence.hotel@bigpond.com">clarence.hotel@bigpond.com</a>	(02) 6645 2088	\$40 - \$60/night single room, \$80 - \$100/night family room.
Private 2brm self-contained unit @ Yamba	<a href="mailto:gayledoe@gmail.com">gayledoe@gmail.com</a>	0417002682	\$185 /week/pp
Private rooms @ Yamba	<a href="mailto:buffy_2707@hotmail.com">buffy_2707@hotmail.com</a>	0427658606	\$150 /week



## ACCOMMODATION AT GRAFTON

There is a Student Accommodation Centre located at Grafton Base Hospital. If your placement is at Maclean and you wish to stay at the Grafton Accommodation Centre you will need to provide your own vehicle as public transport is not available. Maclean an approximately 45 minute drive from Grafton.

The Grafton Student Accommodation Centre has approximately 25 rooms, which have been recently refurbished. Some of the featured include: single rooms with bed, desk and air conditioning, shared kitchen, communal bathroom and toilets, shared lounge, dining and laundry - you will need to supply your own detergent; Wi-Fi; swimming pool



## TRANSPORT

### Getting to Maclean

Regular flights come into Grafton airport. This route is serviced by Rex Airlines further information is available at <http://www.regionalexpress.com.au/home.aspx>

Grafton is serviced by Countrylink trains from both Sydney and Brisbane. See the Countrylink web-site <http://www.countrylink.info/>

### Getting Around in Maclean

Timetables for Maclean Busways buses are available from <http://www.busways.com.au/>.

The bus stops in the main town area of Maclean and is a short walk to the hospital.

Maclean Taxi's can be contacted on 66452122

## ABOUT MACLEAN

If Scotland had more sunshine and sugar cane, it might look just like Maclean in the Clarence Valley region of the NSW North Coast. This charming riverside town is the place for outdoor adventures, eating prawns fresh from the water, sleeping on a houseboat and embracing your Gaelic heritage.



Dubbed 'The Scottish Town of Australia', Maclean has hosted the Highland Gathering each Easter for the past 110 years. The festival celebrates the town's Scottish roots, complete with a parade, bagpipe competitions, caber tossing, traditional Scottish food and dancing in kilts.

Look out for the power poles around town painted in Scottish tartan. The first were decorated for the Olympic Torch arrival in 2000 and there are now more than 200. That's not where bonnie Scotland ends either – many street signs carry Gaelic translations. Explore the history of town at the Maclean Bicentennial Museum.

## WHAT TO DO WHILST IN THE MACLEAN AREA

Built on the banks of the Clarence River, Maclean is surrounded entirely by cane fields, farmland and water. In its quaint town centre, you can check out boutique stores and spend time at the many cafes and restaurants which serve up local produce, like cafe and coffee roastery Botero.

For the best panoramic views of the Clarence Valley and beyond, check out the Maclean Lookout, 2km from the town centre. Walk from the lookout to the Pinnacle, a balancing rock formation surrounded by subtropical rainforest. It's also an important Aboriginal cultural heritage site.

The Clarence River Arts Festival is held every July, with everything from fine art to quilting. Visit the Ferry Park Gallery and shop for local arts and crafts, while Kingstudio Gallery offers painting workshops along with accommodation. There are great markets, too – the Maclean Community Markets is held on the second Saturday of the month.

- The local cinemas:
  - Yamba Cinema at 13 Coldstream St, Yamba and
  - Grafton at The Saraton Theatre <http://www.saraton.com/>
- Many gyms and swimming pools in Maclean, Yamba and Grafton.
- Tennis, Golf, ten pin bowling at Yamba and Grafton
- Many beautiful beaches within a short drive from Maclean
- Fishing or boating
- Ulmarra - Antique



# SITE MAP OF MACLEAN DISTRICT HOSPITAL & COMMUNITY HEALTH

